



Vehicle Feature Tips

Many of the Tips presented below are covered in greater detail in the Owner's Manual, Multimedia System Manuals, Features and Functions Guide, and Quick-Start Guide hangtag supplied with your new vehicle.

Voice Recognition¹ and Bluetooth²

Using Voice Recognition

Improve Bluetooth® Voice Recognition (VR) performance by making a few simple changes to your phone contacts:

- Use full names (first and last names) vs. short or single-syllable names ("John Smith" vs. "Dad," "Smith Residence" vs. "Home").
- Avoid using special characters, emojis, and hyphenated names (@, &, #, /, -, *, +, etc.).
- Avoid using acronyms ("Emergency" vs. "ICE" or "In Case of Emergency") or words with all capital letters.
- Spell words completely; system will not recognize abbreviations ("Doctor Smith" vs. "Dr. Smith").
- Always wait for the beep before speaking any commands.
- When using VR to place a call, speak in a natural, moderate tone, with clear pronunciation. The system may have trouble recognizing commands if you speak too softly or too loudly.
- Open windows, sunroof, weather (wind/rain), or an A/C fan operating at higher speeds can interfere with VR accuracy.
- Your VR system may have difficulty understanding some accents or uncommon names.
- Press the talk button and say "Help" to get a list of available commands.

Pairing or Connecting Your Phone with Bluetooth®

- Select "Device Connections" in the infotainment display or "Call" button on the steering wheel to begin the pairing process if no phone has previously been paired.
- During the pairing process, please make sure you accept all requests for phonebook download and future auto-connection on your phone.
- To pair a second phone or subsequent phones, reference the manuals and guides supplied with your Sportage as steps vary by infotainment system.

- If you experience any issues with auto-connection, try the following:
 - Reboot your phone (turn the phone off and then on).
 - Update the phone operating system to the most recently released version.
 - Delete the phone from the list of Bluetooth® devices on the infotainment system display¹ and delete Kia device from the list of Bluetooth® devices on your phone, and re-pair.
 - Ensure the phone has the Bluetooth® feature activated.
- If some contacts are not downloading to the infotainment system display, check to confirm that the contact has been entered correctly and that it has been stored under the categories (HOME, MOBILE, WORK, iPhone³) that are supported by the infotainment system display. Some contact categories (MAIN, PAGER, OTHER) may not be supported. If the number of contacts exceeds the maximum number allowed on the infotainment system display, contacts will be partially downloaded. Ensure that only the "phone contact list" is selected for contact download on your phone (not social media or email contact lists as these contacts may not download to the infotainment system display).
- Phone operating systems change frequently and some phones may have varying compatibility levels with the Bluetooth® system. For any questions regarding the features of your vehicle, please contact your preferred Kia dealer or contact Kia Consumer Assistance at 1-800-333-4542.

Other Bluetooth® Tips

- Bluetooth® reception is affected by carrier coverage and is dependent on the phone.
- If streaming audio through Bluetooth® from a device, ensure the listening volume on the device is turned up.

Smartphone Connectivity¹



Apple CarPlay³

Your vehicle offers you effortless command of your compatible iPhone® when you connect through Apple CarPlay® on your infotainment system display. This will enable you to make calls, send hands-free texts, access many of your favorite apps and music, and get navigation help with Siri® voice control.

To connect Apple CarPlay, visit <https://youtu.be/98TNWMOQfdU>



Android Auto™⁴

Your vehicle allows you to connect to your compatible Android™ phone via Android Auto™ on your infotainment system display. Through this feature, you can access music, your phone's dialer, navigation help, and more with an intuitive interface and voice commands. You can even access your phone through your steering wheel controls.

To connect Android Auto, visit <https://youtu.be/sTR4KotSOzU>

For select models equipped with wireless Apple CarPlay and Android Auto, visit <https://youtu.be/oUXXuAZAOEI>

Kia Access App⁵



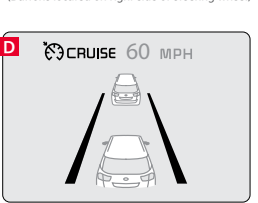
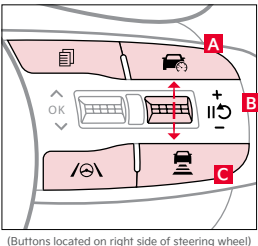
- Your cellphone and your vehicle have to be connected to a cellular network with a good wireless signal strength in order to use Kia Connect (formerly UVO link). If these conditions are not met, remote commands may not execute or may take longer to execute.
- To use Remote Start or Remote Start with Climate Control feature, all doors, hood and trunk/liftgate must be closed and locked. Remote Start or Remote Start with Climate Control feature will operate for about 10 minutes.⁶
- The quickest way to obtain an accurate vehicle status is by pressing the refresh icon on your app or customer web portal.
- Activate Remote Start or Remote Start with Climate Control feature a few minutes before you plan to get into the vehicle. This will allow vehicle interior to reach a desired temperature.
- In order to preserve vehicle battery, Kia Connect will not work seven days after the ignition was last turned on. You will need to re-start your vehicle with a key fob in order to use Kia Connect again.

Feature Videos

To view a video on your mobile device, snap this QR Code or visit the listed website:
<https://www.youtube.com/KiaFeatureVideos>



Smart Cruise Control (SCC) with Stop and Go System*7



SCC is designed to maintain a predetermined distance from vehicles detected ahead by automatically adjusting the driving speed as needed. With SCC on and activated, and the vehicle distance set, the system can slow or bring the vehicle to a complete stop when slowing or stopped traffic is detected ahead.

When stopped traffic ahead starts to move forward, SCC re-engages. However, if the vehicle ahead stops for more than 3 seconds, SCC must be re-engaged by depressing the accelerator pedal or operating the [+], [-] or **B** switch.

To engage SCC and set/adjust the speed:

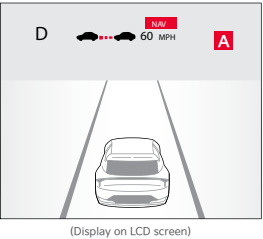
- Press the button **A** to turn the system ON and set to the current speed. The CRUISE indicator, set speed, and vehicle distance will illuminate on the Instrument Cluster.
- Increase the set speed by pressing the [+] switch **B** up
- Decrease the set speed by pressing the [-] switch **B** down

To pause or resume SCC operation: Press the pause/resume button **B**. The SCC indicator on the Instrument Cluster will turn OFF.

To set the vehicle-to-vehicle distance: Press the Vehicle Distance button **C** on the steering wheel. The image on the LCD screen **D** will change when scrolling through the settings.

To turn SCC system OFF: Press the Driving Assist button **A**.

Navigation-based Smart Cruise Control (NSCC)*8



NSCC can automatically adjust the SCC's set vehicle speed according to speed limits and known curves on limited-/controlled-access highways using information from the Navigation System.

To enable NSCC: Go to Vehicle Settings in the infotainment system, select Driver Assistance, then Driving Convenience, then Highway Auto Speed Change.

When SCC is on and operating and the vehicle is driving on limited-/controlled-access highways, NSCC will be indicated by the illuminated WHITE NAV icon **A** on the Instrument Cluster.

When NSCC detects a curve ahead, the system activates and reduces the vehicle speed, and the NAV icon **A** will turn GREEN. When the vehicle passes the curved road, the vehicle may return to its previously set SCC speed.

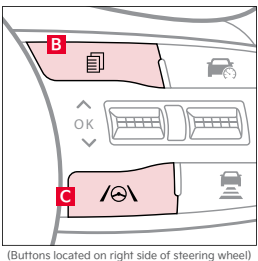
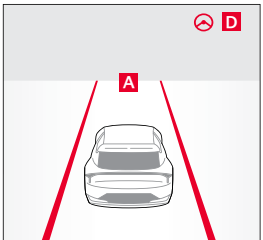
Autoset (Automatic change of set speed):

If SCC is set to the current speed limit on the highway during NSCC operation, the set speed is changed automatically whenever the speed limit changes.

Reminders:

- NSCC requires an active Kia Connect subscription.⁵
- NSCC is only available on limited-/controlled-access roads and highways.

Lane Keeping Assist (LKA)⁷ and Lane Following Assist (LFA)⁷



LKA is designed to detect the lane markers on the road and help alert the driver or assist in steering to potentially help keep the vehicle in the lane. LFA is designed to help the vehicle stay centered in its lane **A** by monitoring the detected lane markings ahead and adjusting the steering.

To enable LKA and/or LFA: Go to User Settings in the Instrument Cluster LCD, OR press and hold the Mode button **B** on the right side of the steering wheel, OR press the SETUP key/button on the infotainment system. Select the Vehicle button to enter the Vehicle Settings, then Driver Assistance, then Lane Safety.

Once enabled, press and hold the Lane Safety Button **C** to turn either system on or off. When on, the Lane Safety icon on the Instrument Cluster will illuminate WHITE while the system does not detect the lane markers. When the system detects the lane markers and can assist the steering, the icon will turn GREEN **D**.

LFA Hands-off Warning: If the driver removes their hands from the steering wheel for several seconds, a warning message will appear on the Instrument Cluster, and an audible warning will sound. If the driver's hands are not replaced on the steering wheel, LFA will cancel.

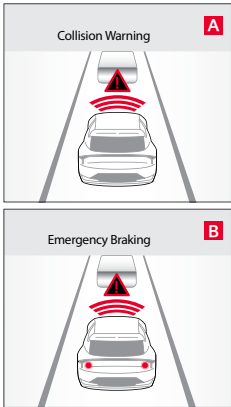
LKA will operate only when these conditions are met:

- The vehicle speed exceeds approximately 40 mph.
- LKA recognizes the lane the vehicle is traveling in.
- The vehicle is between the lane markers.

LFA will operate only when these conditions are met:

- LFA recognizes both sides of the lane markers the vehicle is traveling in.
- The vehicle is traveling slower than 110 mph.

Forward Collision-Avoidance Assist (FCA)⁷



FCA is designed to warn the driver when a collision with a vehicle, pedestrian, or cyclist in the roadway is imminent and, if necessary, temporarily apply emergency braking.

Initially, FCA provides a Forward Collision Warning (FCW) when it detects a potential collision, emitting an audible warning and visual alert on the Instrument Cluster **A**. If the system detects that the collision risk has increased, FCA automatically applies the brakes to decrease vehicle speed **B**, potentially helping to reduce the effects of a possible collision.

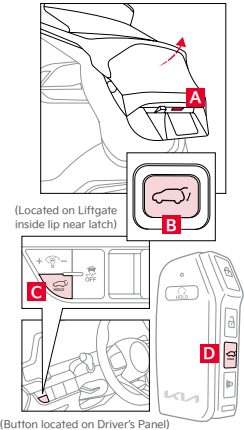
To enable/disable FCA: Go to User Settings, select the Vehicle button, then Driver Assistance, then Forward Safety.

To adjust the FCA initial warning activation time: Go to Vehicle Settings on the infotainment system, select Setup, then Driver Assistance, then Warning Timing, then Standard or Late, depending on your preference.

FCA/FCW will operate only when these conditions are met:

- Ignition is on or the Power button* is ON.
- Vehicle is traveling faster than 3 mph.
- Electronic Stability Control (ESC) is ON.

Smart-Power Liftgate Operation*9



From outside the vehicle: Open by pressing the Rear Hatch Release button **A** on exterior of the liftgate, and close by pressing the Power Liftgate Close button **B**.

From inside the vehicle: Open by pressing and briefly holding the Power Liftgate Open/Close button **C**, and close by pressing and holding the button **C** until liftgate is completely closed.*

Using Smart Key: Open by pressing and holding the liftgate button **D** until the liftgate begins opening, and close by pressing and holding the button **D** until liftgate is completely closed.*

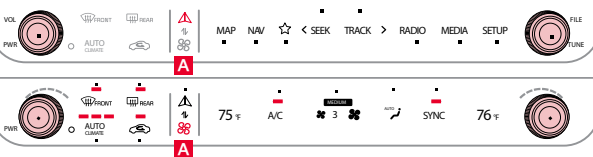
*If button is released while closing, the liftgate will stop and a chime will sound.

To set the opening height: Go to Vehicle Settings OR press the Setup key/button on the infotainment system, select Vehicle, Door, then Power Liftgate Opening Height, OR manually position the liftgate to the preferred height, then press and hold the Power Liftgate Close button **B** more than 3 seconds. A system beep will sound twice indicating the height setting has been saved.

Reminders:

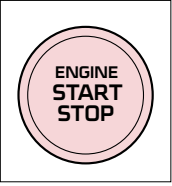
- Pulling the Rear Hatch upward by the handle or pressing the button a second time will interrupt the automatic opening of the Power Liftgate.
- When opening or closing, be mindful of any objects or persons that may be in the way.

Infotainment System / Climate Control Mode Switch Button*



Press to toggle between infotainment system and Climate Control Modes. Press and hold the Climate Control button **A** to set the default button display mode.

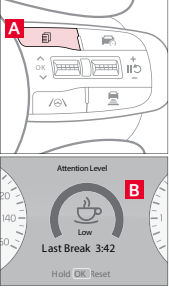
Accessory Mode with Smart Key*



With standard key vehicles, you can turn the key to the accessory mode and utilize the electronic accessories without starting the vehicle. This is still possible with Smart Key-equipped vehicles. To do this, enter the vehicle with the Smart Key and push the ENGINE START/STOP button one time without depressing the brake pedal. This will put the vehicle in Accessory mode and ACC will illuminate in AMBER.

Keeping the vehicle in ACC or the ON position for extended periods of time without turning the engine on may discharge the vehicle's battery.

Driver Attention Warning (DAW)¹⁰

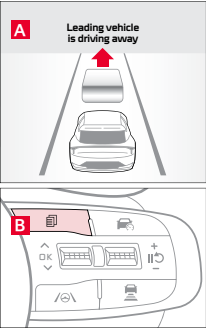


DAW is designed to alert the driver if it detects inattentive driving practices and, in certain situations, can give a warning signal to take a break from driving.

To enable/disable DAW: Go to User Settings in the Instrument Cluster LCD, OR press and hold the Mode button **A** on the right side of the steering wheel, OR press the SETUP key/button on the infotainment system. Select Driver Assistance, then Driving Attention Warning, then Inattentive Driving Warning.

If DAW is activated, the DAW information will appear on the Instrument Cluster LCD **B** when you select the Assist mode.

Leading Vehicle Departure Alert (LVDA)⁷



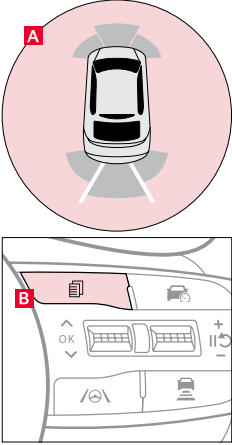
LVDA is a feature of Driver Attention Warning (DAW), and is designed to inform the driver when the vehicle ahead starts to move away or departs from a stop.

When DAW is on and your vehicle is stopped behind another vehicle, the system can detect when the leading vehicle is driving away, and an alert will sound to let you know you can start driving. If no action is taken, a message **A** will appear on the Instrument Cluster LCD.

To enable/disable LVDA: Go to User Settings in the Instrument Cluster LCD, OR press and hold the Mode button **B** on the right side of the steering wheel, OR press the SETUP key/button on the infotainment system. Select Vehicle Settings, then Driver Assistance, then Driver Attention Warning, then Leading Vehicle Departure Alert.

To adjust the DAW/LVDA initial warning activation time: Go to Vehicle Settings on the infotainment system, select Setup, then Driver Assistance, then Warning Timing, then Standard or Late, depending on your preference.

Reverse Parking Collision-Avoidance Assist (PCA)*⁷



PCA is designed to detect certain objects/pedestrians behind the vehicle and issues an audible warning and/or applies emergency braking to help reduce the possibility of a collision when the vehicle is in reverse. When PCA activates, lines appear behind the vehicle image **A** in the Instrument Cluster LCD.

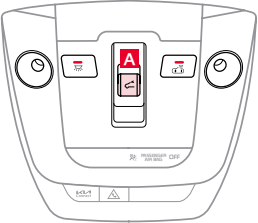
To enable/disable PCA: Go to User Settings* in the Instrument Cluster LCD, OR press and hold the Mode button **B** on the right side of the steering wheel, OR press the SETUP key/button to go to Vehicle Settings in the infotainment system. Select Vehicle Settings, then Driver Assistance, then Parking Safety.

PCA User Settings:

- Rear Active Assist: PCA will warn the driver with an audible alert and may apply temporary braking.
- Rear Warning Only: PCA will warn the driver with an audible alert.
- Off: PCA is disabled.

To adjust the warning volume: Go to Vehicle Settings on the infotainment system, select Setup, then Vehicle, then Driver Assistance, then Warning Volume. To adjust the warning activation time: Go to Vehicle Settings on the infotainment system, select Setup, then Vehicle, then Driver Assistance, then Warning Timing, then Standard or Late, depending on your preference.

Panoramic Sunroof Operation with Power Sunshade*



The sunroof operation is controlled through a multidirectional switch. The ignition or Engine Start/Stop button needs to be in the ON position to operate the sunroof.

To slide the sunshade and sunroof:

- Auto Open: Slide switch **A** backward to the farthest position and release.
- Auto Close: Slide switch **A** forward to the farthest position and release.

To slide the power sunshade only:

- Auto Open: Slide switch **A** partially backward to the first detent position and release.
- Auto Close: Slide switch **A** partially forward to the first detent position and release.

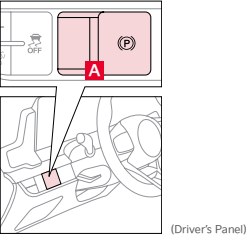
To slide the sunroof (with power sunshade open):

- Open: Slide switch **A** backward to the first detent position and release.
- Close: Slide switch **A** forward to the first detent position and release to close sunroof glass only. Slide switch **A** backward to the farthest position and release to close sunroof glass and sunshade.

To tilt the sunroof:

- Raise: Push switch **A** upward.
- Lower: Push switch **A** forward.

Electronic Parking Brake (EPB)*



The Electronic Parking Brake (EPB) system utilizes an electric motor to engage the parking brake.

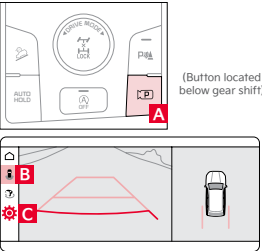
Applying the Parking Brake

Depress the brake pedal and pull up the EPB switch **A**. Ensure that the indicator light is illuminated on the Instrument Cluster. If parked on a steep incline/decline, pull up the EPB switch for more than 3 seconds for a firmer EPB application.

Releasing the Parking Brake

The EPB will automatically release when the shifter is placed in R (Reverse) or D (Drive). To release EPB manually, depress the brake pedal, then press the EPB switch **A**, with the ignition switch in the ON position. Ensure that the indicator light is OFF.

Surround View Monitor (SVM)*7



SVM is a parking support system that uses four cameras to show the viewing areas around the front, rear, left, and right sides of the vehicle on the infotainment screen. It can also present a 3D view of the vehicle and surroundings.

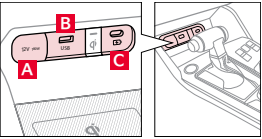
To enable/disable SVM Auto On: Press the SETUP key/button on the infotainment system, select Vehicle Settings, then Driver Assistance, then Parking Safety.

To manually engage SVM: Press the Parking/View button **A**.

To change the SVM settings: Press the onscreen settings icon **C**, while SVM is operating.

To view other modes: Touch the view icons **B** on the SVM screen.

Multimedia USB Port, Power Outlets, & USB Charger Port

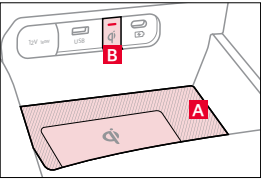


Power Outlets **A**: Charge mobile phones and other devices designed to operate on a 12V (180W max.) power outlet.

Multimedia USB Port **B**: Connect USB audio devices and smartphones to the vehicle.

USB-C Charger Port **C**: Charge mobile phones and other devices using a USB-C cable. The Engine Start/Stop button needs to be in the ACC/ON/START position to operate the USB-C Charger Port.

Wireless Smartphone Charging System*11



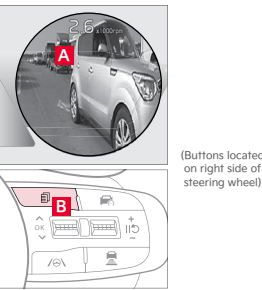
Charge a compatible smartphone wirelessly by placing it on the charging pad **A** at the front of the console, near the Multimedia USB ports and the charging indicator.

To enable Wireless Charging: Go to User Settings in the Instrument Cluster LCD or Vehicle Settings in the infotainment system. Then select Convenience, then Wireless Charging System.

The indicator light **B** may change to AMBER once wireless charging begins, then to GREEN once charging is complete.

For wireless charging to occur, all doors (excluding rear hatch) must be closed and the Smart Key must be detected inside the vehicle.

Blind-Spot View Monitor (BVM)*12



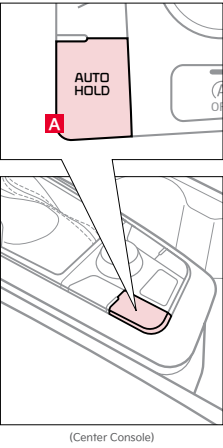
BVM is designed to display the vehicle's rear and side blind spot areas in the Instrument Cluster LCD **A**.

To enable/disable BVM: Go to User Settings in the Instrument Cluster LCD, OR press and hold the Mode button **B** on the right side of the steering wheel to go to Vehicle Settings, OR press the SETUP key/button on the infotainment system. Select Vehicle, then Driver Assistance, then Blind-Spot Safety, then Blind-Spot View.

When operating the turn signal, BVM displays video of the blind-spot view for the direction indicated.

BVM will not operate when the Power button is off, a turn signal is deactivated, or another warning screen comes up on the Instrument Cluster LCD.

Auto Hold*



Auto Hold temporarily keeps the vehicle at a standstill without the brake pedal being depressed after the vehicle has come to a complete stop.

To enable/disable Auto Hold: Press the AUTO HOLD button **A** on the center panel below the gear shift.

The Auto Hold indicator on the Instrument Cluster has four states:

Standby: With vehicle at a standstill and AUTO HOLD button **A** pressed ON, the indicator will illuminate WHITE. While vehicle is in motion, the Auto Hold indicator will remain WHITE.

Engaged: When coming to a complete stop by depressing the brake pedal, the Auto Hold indicator changes from WHITE to GREEN.

Not Illuminated: The indicator will turn off when the AUTO HOLD button **A** is manually pressed off.

Malfunction: When the indicator is illuminated AMBER, there may be a system malfunction. Take your vehicle to a local Kia dealer.

Reminder:

Before Auto Hold will operate, the driver's door, engine hood, and liftgate must be closed.



More Model Awards for Best Residual Value Than Any Other Brand.¹³

— J.D. Power 2023 U.S. Residual Value Awards

KIA Movement that inspires

2023 Sportage X-Pro Prestige shown on cover. Images or graphics for illustration only. *If equipped. ¹Driving while distracted can result in a loss of vehicle control that may lead to an accident, severe personal injury, and death. The driver's primary responsibility is in the safe and legal operation of a vehicle, and use of any handheld devices, other equipment, or vehicle systems which take the driver's eyes, attention, and focus away from the safe operation of a vehicle or which are not permissible by law should never be used during operation of the vehicle. ²The Bluetooth® word mark and logos are registered trademarks owned by Bluetooth SIG, Inc. and any use of such marks by Kia is under license. A Bluetooth® enabled cell phone is required to use Bluetooth®. ³Wireless Technology. ⁴Apple CarPlay, iPhone, and Siri are registered trademarks of Apple Inc., registered in the U.S. and other countries. CarPlay runs on your smartphone cellular data service. Normal data rates will apply. ⁵Android Auto vehicle user interface is a product of Google and its terms and privacy statements apply. Requires the Android Auto app on Google Play™ store and an Android compatible smartphone running Android 5.0 Lollipop or higher. Data plan rates apply. ⁶Android, Android Auto, and Google Play are trademarks of Google LLC or its affiliates. ⁷Purchase/lease of certain 2023 and newer Kia vehicles with Kia Connect (formerly UVO link) includes a complimentary 1-year subscription starting from new vehicle retail sale/lease date as recorded by the dealer. After your complimentary 1-year Kia Connect subscription expires, continued access to the full suite of Kia Connect services available on your Kia will require a paid subscription at the then current subscription rate or your use of certain Kia Connect features may immediately terminate. Use of Kia Connect is subject to agreement to the Kia Connect Privacy Policy (available at owners.kia.com/us/en/privacy-policy.html) and Terms of Service (available at owners.kia.com/us/en/terms-of-service.html). Kia Connect is transferable to subsequent owner during the original Kia Connect service term. Only use Kia Connect when safe to do so. Kia Access App is available from the Apple® App Store® or Google Play™ store. Kia America, Inc. reserves the right to change or discontinue Kia Connect at any time without prior notification or incurring any future obligation. Message and data rates may apply. Cellular and GPS coverage are required to use most features. Kia Connect features may vary by model, model year, and trim level. Features, specifications, and fees are subject to change. For more on details and limitations, visit www.kia.com or your authorized Kia dealer. Apple and App Store are registered trademarks of Apple Inc. Google and logos are trademarks of Google LLC. Kia Connect may currently be unavailable for Model Year 2022 and newer vehicles sold or purchased in Massachusetts; please see the Kia Owner's Portal for updates on availability. ⁸Do not use remote climate control or remote start if vehicle is in an enclosed area (e.g., closed garage) or a partially enclosed area without ventilation. Close all doors leading from adjacent living areas to the vehicle area before executing a remote climate control or remote start command. ⁹Driver-assist technologies are not substitutes for safe driving, and may not detect all objects surrounding vehicle. Always drive safely and use caution. ¹⁰When engaged, Navigation-based Smart Cruise Control (NSCC) is not a substitute for safe driving and cruise-control procedures. This is not an auto-pilot feature. It may not detect every object around the vehicle. Always drive safely and use caution. ¹¹Driving with the liftgate open may be unlawful and can draw dangerous exhaust fumes into your vehicle; if you choose to do so, keep air vents and all windows open for proper ventilation. ¹²When engaged, Driver Attention Warning is not a substitute for safe driving and may not detect all instances of inattentive driving practices. Failure to pay attention to travel conditions and vehicle operation could result in loss of vehicle control. Always drive safely and use caution. ¹³Charging system only works with select devices. Refer to the vehicle's Owner's Manual for warnings and instructions. ¹⁴When engaged, Blind-Spot View Monitor is not a substitute for safe driving and may not display all objects around vehicle. Always drive safely and use caution. ¹⁵Kia Telluride, Sportage, Rio, K5, and Soul have the highest retained value within their respective segments and Kia received the highest number of awards for residual value compared to all other brands in the J.D. Power 2023 U.S. ALG Residual Value Awards, based on the J.D. Power ALG residual value forecast for the 2023 model year. Visit jdpower.com/awards for more details.

©2023 Kia America, Inc., 111 Peters Canyon Road, Irvine, CA 92606