



## Vehicle Feature Tips

Many of the tips presented below are covered in greater detail in the Owner's Manual, Multimedia System Manuals, Features and Functions Guide, and Quick-Start Guide hangtag supplied with your new vehicle.

### Voice Recognition<sup>1</sup> and Bluetooth<sup>®2</sup>

#### Using Voice Recognition

Improve Bluetooth<sup>®</sup> Voice Recognition (VR) performance by making a few simple changes:

- Use full names (first and last names) vs. short or single-syllable names ("John Smith" vs. "Dad," "Smith Residence" vs. "Home").
- Avoid using special characters, emojis, and hyphenated names (@, &, #, /, -, \*, +, etc.).
- Avoid using acronyms ("Emergency" vs. "ICE" or "In Case of Emergency") or words with all capital letters.
- Spell words completely; system will not recognize abbreviations ("Doctor Smith" vs. "Dr. Smith").
- Always wait for the beep before speaking any commands.
- When using VR to place a call, speak in a natural, moderate tone, with clear pronunciation. The system may have trouble recognizing commands if you speak too softly or too loudly.
- Open windows, sunroof, weather (wind/rain), or an A/C fan operating at higher speeds can interfere with VR accuracy.
- Your VR system may have difficulty understanding some accents or uncommon names.
- Press the talk button and say "Help" to get a list of available commands.

#### Pairing or Connecting Your Phone with Bluetooth<sup>®</sup>

- Select "Device Connections" in the infotainment system display<sup>1</sup> or "Call" button on the steering wheel to begin the pairing process if no phone has previously been paired.
- During the pairing process, please make sure you accept all requests for phonebook download and future auto-connection on your phone.
- To pair a second phone or subsequent phones, reference the manuals and guides supplied with your Kia EV6 as steps vary by infotainment system.

- If you experience any issues with auto-connection, try the following:
  - Reboot your phone (turn the phone off and then on).
  - Update the phone operating system to the most recently released version.
  - Delete the phone from the list of Bluetooth<sup>®</sup> devices on the infotainment system display and delete Kia device from the list of Bluetooth<sup>®</sup> devices on your phone, and re-pair.
  - Ensure the phone has the Bluetooth<sup>®</sup> feature activated.
- If some contacts are not downloading to the infotainment system display, check to confirm that the contact has been entered correctly and that it has been stored under the categories (HOME, MOBILE, WORK, iPhone<sup>®3</sup>) that are supported by the infotainment system display. Some contact categories (MAIN, PAGER, OTHER) may not be supported. If the number of contacts exceeds the maximum number allowed on the infotainment system display, contacts will be partially downloaded. Ensure that only the "phone contact list" is selected for contact download on your phone (not social media or email contact lists as these contacts may not download to the infotainment system display).
- Phone operating systems change frequently, and some phones may have varying compatibility levels with the Bluetooth<sup>®</sup> system. For any questions regarding the features of your vehicle, please contact your preferred Kia dealer or call Kia Consumer Assistance at 1-800-333-4542.

#### Other Bluetooth<sup>®</sup> Tips

- Bluetooth<sup>®</sup> reception is affected by carrier coverage and is dependent on the phone.
- If streaming audio through Bluetooth<sup>®</sup> from a device, ensure the listening volume on the device is turned up.

### Smartphone Connectivity<sup>1</sup>



#### Apple CarPlay<sup>®3</sup>

Your vehicle offers you command of your compatible iPhone<sup>®</sup> when you connect through Apple CarPlay<sup>®</sup> on your infotainment system display. This will enable you to make calls, send hands-free texts, access many of your favorite apps and music, and get navigation help with Siri<sup>®</sup> voice control.

To connect Apple CarPlay, visit <https://www.youtube.com/watch?v=8R6mmmtuFrS>



#### Android Auto<sup>™4</sup>

Your vehicle allows you to connect to your compatible Android<sup>™</sup> phone via Android Auto<sup>™</sup> on your infotainment system display. Through this feature, you can access music, your phone's dialer, navigation help, and more with an intuitive interface and voice commands. You can even access your phone through your steering wheel controls.

To connect Android Auto, visit <https://www.youtube.com/watch?v=8R6mmmtuFrS>

The 2025 EV6 is equipped with wireless Apple CarPlay<sup>®</sup> and wireless Android Auto<sup>™</sup>. See the Wireless Phone Projection section of this document for setup information.

### Kia Access App<sup>\*5</sup>



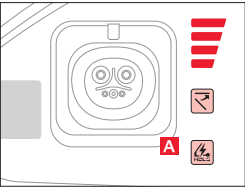
- Your cell phone and your vehicle have to be connected to a cellular network with a good wireless signal strength in order to use Kia Connect<sup>®</sup> via the Kia Access App. If these conditions are not met, remote commands may not execute or may take longer to execute.
- To use the Remote Start or Remote Start with Climate Control feature, all doors, the hood, and the trunk/liftgate must be closed and locked. Remote Start or Remote Start with Climate Control feature will operate for 10 minutes.
- Activate the Remote Start or Remote Start with Climate Control feature a few minutes before you plan to get into the vehicle. This will allow the vehicle interior to reach a desired temperature.
- The quickest way to obtain an accurate vehicle status is by pressing the refresh icon on your app or on the Kia owner's portal.
- In order to help preserve vehicle battery, Kia Connect will not work seven days after the ignition was last turned on. You will need to restart your vehicle with a key fob in order to use Kia Connect again.

### Feature Videos

To view a video on your mobile device, snap this code or visit the listed website:  
<https://www.youtube.com/KiaFeatureVideos>



## Scheduled Charging



(Button is located next to the charging port.)

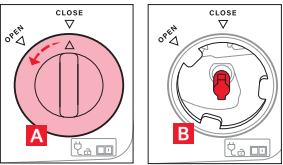
Charging times can be set through the infotainment system Vehicle Settings. Select EV, then CHARGING AND CLIMATE. You can also use the Scheduled Charging\* feature on the Kia Connect app.

The Kia Connect app can help you find the nearest charging station, and it also displays charging status and Scheduled Charging information. On your smartphone, go to an app store or marketplace to download the Kia Access App.

**Reminder:** When Scheduled Charging is set and the charger is plugged in, charging of the electric vehicle will not begin until the time and date are set.

**To deactivate Scheduled Charging:** Depress the Charging button **A** to temporarily disable the Scheduled Charging feature when immediate charging is required.

## Charging Connector Emergency Release



If the Charging Connector is not unlocking, use the Emergency Release inside the liftgate. Turn the Emergency Release cover **A** to open and remove. Pull the Emergency Release **B** to unlock the Charging Connector.

**Note:** The Emergency Release is located on right side panel inside the liftgate.

## Charging Your Electric Vehicle<sup>7</sup>

### Level 2 Charging (AC):

A Level 2 or 240-volt charger is the recommended charging system for your EV. This type of charger uses 240 volts of electricity and takes approximately 9 hours for a full charge. A Level 2 charger may be able to be installed at your home by a qualified electrician or can be found at a public charging station.

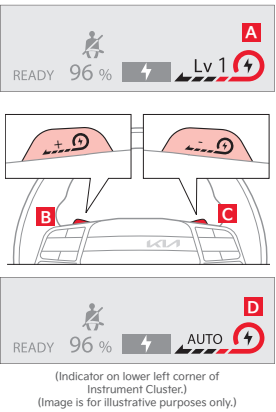
**Reminder:** The shape of the charger and how to use the charger may be different for each manufacturer. Please see the Owner's Manual for more information.

### Level 3 Charging (DC):

A Level 3 or DC fast charger is usually found at public charging stations. You can charge from a 10% to 80% state of charge in about 18 minutes using a DC fast charger.

**Reminder:** Frequent use of DC fast charging can negatively impact battery performance and durability, and Kia recommends minimizing use of DC fast charging.

## Regenerative Braking with Paddle Switches



The regenerative braking system is designed to charge the battery when coasting or when you use the brakes to stop the vehicle. Use the paddle switches to adjust the regenerative braking level from 0 to 3 during decelerating or braking. The level will be displayed on the Instrument Cluster **A**.

- Pull the left paddle switch **B** to increase regenerative braking and deceleration.
- Pull the right paddle switch **C** to decrease regenerative braking and deceleration.

### The paddle switches do not operate when:

- Both paddle switches are pulled at the same time.
- The vehicle is decelerating by depressing the brake pedal.
- Cruise Control or Smart Cruise Control (SCC) is active.

### i-Pedal

i-Pedal driving controls the vehicle speed by the accelerator pedal, both acceleration and deceleration. To activate i-Pedal:

- Pull the left paddle switch **B** to Level 3 regenerative braking (see indicator on Instrument Cluster).
- Then pull the left paddle switch **B** once again when the regenerative braking level is set to Level 3.

The i-Pedal indicator symbol will be illuminated on the Instrument Cluster.

### One-Pedal Driving

One-Pedal Driving increases the regenerative braking amount to above Level 3 and may slow the vehicle down by pulling the left paddle switch.

- Pull and hold the left paddle switch **B** while coasting to activate One-Pedal Driving.
- When the vehicle speed is above 2 mph, release the left paddle switch **B** for less than 0.5 seconds to return to the previously set level of regenerative braking.
- When the vehicle speed is below 2 mph, One-Pedal Driving can stop the vehicle even though the left paddle switch is released.

**Reminder:** The driver's seat belt must be fastened to operate One-Pedal Driving. Do not solely rely on One-Pedal Driving to stop the vehicle, as it may not be able to stop the vehicle depending on vehicle and road conditions. Always use the brake pedal when necessary and pay attention to the road conditions ahead and apply the brake pedal if necessary.

### Smart Regeneration System

This system is designed to automatically adjust the regenerative braking level based on a vehicle being detected in front and road conditions.

**To activate Smart Regeneration:** Pull and hold the right paddle switch **C** for more than 1 second to turn ON/OFF the automatic change of regenerative braking. AUTO **D** will be displayed on the Instrument Cluster. The minimum regenerative braking level can be adjusted when in AUTO mode by using the left and right paddle switches.

Adjust the Smart Regeneration levels in the Vehicle Settings on the Infotainment System by pressing SETUP > EV > SMART REGENERATION > STRONG/MEDIUM/GENTLE.

## Matte Paint\* Care

To enjoy your vehicle's matte appearance for many years to come, please follow these owner care and maintenance tips.

### Do's and Don'ts

- Remove foreign substances such as insect remains, tar, and road debris using a soft applicator and a mild solvent; saturate and soak the area before cleaning – rub lightly.
- Hand-wash with a soft wash mitt and mild cleaning product safe for matte paint.
- Use microfiber cleaning cloths with an alcohol-based window cleaner for basic surface clean-up.
- Do not use wax, detail spray, or any products made for normal paint. Use only products specifically developed for matte finish paint.
- Do not use products that are even mildly abrasive, such as polishes, glazes, or rubbing compounds.
- Do not use terry cloth, cloth, or paper towels. Do not rub the finish vigorously; this will burnish the paint finish, causing a permanent shiny spot. Shiny spots cannot be removed.
- Do not use commercial car wash facilities or their shine enhancement products. Most car wash brushes, large mechanized "towels," and shine enhancement products can damage matte paint.
- Do not use mechanical cleaners or polishers.

# Electric Vehicle (EV) Indicators

## A State of Charge (SOC) gauge

The State of Charge gauge displays the high-voltage battery charge status.

## B Power/Charge gauge

The Power/Charge gauge provides information on the energy consumption rate of the vehicle and the charge status of the regenerative brakes.

- **POWER** – Shows the energy consumption rate of the vehicle when driving uphill or accelerating. The more electric energy used, the higher the gauge level.
- **CHARGE** – Shows the charging status of the battery when it is being charged by the regenerative brakes. The more electric energy charged, the lower the gauge level.

## C Distance to Empty (DTE)

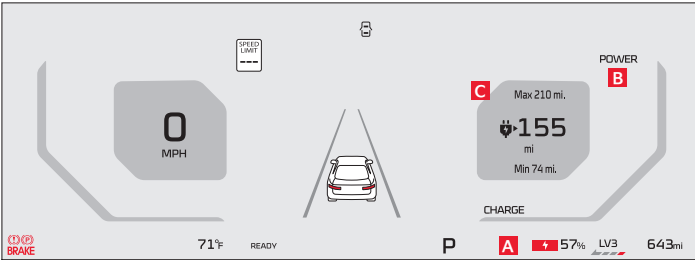
DTE is the estimated distance the vehicle can be driven with the remaining high-voltage battery level. The DTE will vary according to the selected drive mode and Climate Control settings.

**READY** **Ready indicator light** – Illuminates when the vehicle is ready to drive. When the ready indicator light is blinking, the vehicle has detected a possible malfunction. Have an authorized Kia dealer address the concern as soon as possible.

**EV Service warning light** – Illuminates when there is a malfunction related to the electric vehicle control system. Have an authorized Kia dealer address the concern as soon as possible.

**Power down warning light** – Illuminates when the vehicle's speed and performance are limited for the safety of the electric vehicle.

**Battery conditioning mode indicator light** – Illuminates when the battery conditioning mode is activated.



**Charging indicator light** – Shows the charging status of the high-voltage battery. When charging, the GREEN indicator turns on. The indicator turns off when not charging.

**High-voltage battery level warning light** – Illuminates when the high-voltage battery charge level is insufficient.

**Regenerative brake warning lights** (when both indicators are lit) – Illuminates when the regenerative brake system is not functioning correctly.

# Energy Consumption

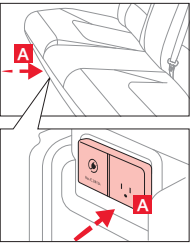
There are several factors that contribute to your electric vehicle's energy consumption, including maintenance of your vehicle, driving style, weather, durability of the battery, and environmental conditions.

## Below are tips on how to help reduce energy consumption:

- Use Scheduled Climate settings to preheat or precool the vehicle while plugged in before driving.
- Keep your vehicle in good condition with regular maintenance.
- Don't "ride" the brake pedal.
- Use the climate control system less often. Use the Driver Only setting.
- Keep tires inflated to the recommended pressure.
- Travel lightly, without carrying unnecessary weight in your vehicle.
- Ensure wheels are aligned correctly.
- Avoid placing large or heavy items on roof racks.
- Avoid hilly, winding, or poorly maintained roads.

For more information, refer to the Owner's Manual.

# EV Charge Transfer/Vehicle to Load (V2L)<sup>8</sup>

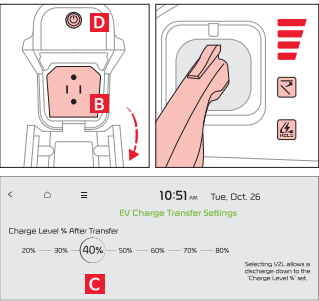


EV Charge Transfer/Vehicle to Load (V2L) allows you to use the vehicle's high-voltage battery to power certain electrical devices like home appliances or other small electronic devices. V2L can also be used to charge items like electric bikes or another electric vehicle.

If equipped, there are two ports: an interior and an exterior. The interior port **A** is under the rear seat. The exterior port is the charging port for your EV.

If your EV's high-voltage battery discharges to the limit set, the system will automatically stop supplying power to the ports. Set your EV's battery discharge limit in the infotainment system's Settings **C**. Press the EV button onscreen. Select Vehicle to Load (V2L) > EV Charge Transfer Settings.

- Interior Port** – The EV POWER button needs to be ON to operate the port. Check the indicators on the port to ensure power is on.
- Exterior Port** – Open the cover of the V2L connector **B** and connect your appliance or electronic device. Connect the V2L connector to the charging inlet on the EV, and press the power button **D** on the connector.
- Reminder:** Maximum wattage is 1.9 kW, or 1,900 watts.



# Distance to Empty (DTE) or Range

Distance to Empty (DTE) or Range is the estimated distance an EV can be driven with the remaining electric energy until the battery reaches zero. DTE can vary depending on the selected drive mode, current driving traffic, driving patterns, air conditioner or heater use, and how much cargo you are carrying.

## Quick Tips

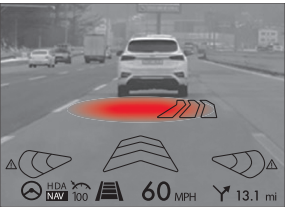
- When decelerating or driving downhill, regenerative braking charges the high-voltage battery, which minimizes energy loss and increases the Distance to Empty or Range.
- When you set a destination via the onboard navigation system, DTE is calculated based on the route selected. By setting a final destination, DTE accuracy may improve. By knowing the final location, the vehicle can better predict the amount of battery energy it will need to reach that destination.
- When operating the climate control, use the DRIVER ONLY function to conserve energy.
- In cold weather, use scheduled heating to reduce the amount of energy consumption when plugged in. Also make use of the heated seats and steering wheel (if equipped) to reduce energy consumption.
- In the EV Settings, select WINTER MODE to increase the battery temperature in cold weather.

## Reminders

- If DTE displays "Zero Miles," you need to charge the vehicle immediately.
- Most electric vehicles can drive an additional two to five miles depending on driving conditions.
- Distance to Empty may depend on many factors such as the charge amount of the high-voltage battery, weather, temperature, durability of the battery, geographical features, and driving style.
- Operating the climate control system may reduce the Distance to Empty.



# Augmented Reality Head-Up Display (HUD)\*1



(Image is for illustrative purposes only.)

Augmented Reality Head-Up Display (HUD) is a semi-transparent display that projects a snippet of information from the Instrument Cluster and navigation system onto the windshield glass.

**When in Augmented Reality mode, HUD shows the following information:**

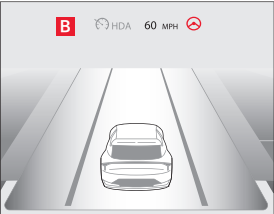
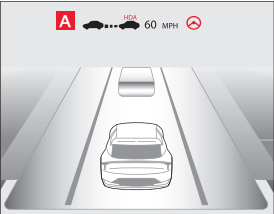
- Turn By Turn (TBT) navigation
- Traffic
- Speedometer
- SCC set speed
- SCC Vehicle Distance
- Blind-Spot Safety
- Highway Auto Speed Change
- Lane Safety
- Highway Driving Assist (HDA)\*
- Lane Following Assist
- Surrounding Vehicle

**HUD User Settings**

Drivers can adjust the HUD settings from the Vehicle Settings. Press the SETUP key/button on the infotainment system. Select VEHICLE, then Head-Up Display. HUD settings include:

- **Display Mode**
- **Display Control**
- **AR Matching Adjustment:** Adjusts the position of the augmented reality content.
- **Content Selection:** Select which features display on the windshield.

## Highway Driving Assist (HDA)\*9



HDA is designed to adjust the speed of the vehicle when driving on limited-/controlled-access highways/freeways based on available highway speed information.

Highway Lane Change Assist may assist in changing lanes, if it detects the driver has turned on the lane change signal and if the lane change is possible.

When HDA is activated and the conditions are met, the HDA indicator light **A** will illuminate GREEN. If the conditions are not met, HDA will be in standby mode, and the HDA indicator light **B** will illuminate GRAY. When in operation, and if both lanes are recognized, the Instrument Cluster will show the lanes illuminated WHITE and the HDA indicator illuminated GREEN **A**.

If HDA is activated, conditions are met, and the Smart Cruise Control (SCC) speed is set by the driver (at the posted highway speed limit or slower), HDA will enter the automatic speed setting mode. The set speed and AUTO will be displayed in GREEN, and a warning alert will sound.

**HDA will operate only when these conditions are met:**

- Driving on the main road of highways, and turning on Highway Driving Assist by pressing the Driving Assist button.
- Entering the main road of highways while Lane Following Assist and Smart Cruise Control are operating.

**HDA User Settings:**

- **To enable:** Press the SETUP key/button on the infotainment system, select VEHICLE > Driver Assistance > Driver Convenience > Highway Driving Assist.
- **Warning Methods:** Select Vehicle > Driver Assistance > Warning Method > Warning Volume and adjust. You can also select Driving Safety Priority so the audio system volume will lower when HDA sounds a warning.

## Wireless Phone Projection

You can connect your compatible iPhone<sup>®3</sup> to the vehicle through wireless Apple CarPlay<sup>®</sup>,<sup>3</sup> and you can connect your compatible Android<sup>™4</sup> phone to the vehicle through wireless Android Auto<sup>™</sup>.<sup>4</sup>

**Wireless Apple CarPlay®**

Wireless Apple CarPlay<sup>®</sup> requires iPhone<sup>®</sup> cellular data service. Normal data rates apply.

Setup:

1. On the center display, touch SETUP > DEVICE CONNECTIONS > PHONE PROJECTION.

**Wireless Android Auto™**

Wireless Android Auto<sup>™</sup> only works with certain Android<sup>™</sup> models and requires cellular data service. Normal data rates apply.

Setup:

1. Download the Android Auto<sup>™</sup> app from the Google Play<sup>™4</sup> store. Open the Android Auto<sup>™</sup> app and proceed with the on-screen instructions to complete setup on the mobile device.
2. On the center screen, touch SETUP > DEVICE CONNECTIONS > PHONE PROJECTION.

**Quick Tips for Wireless Apple CarPlay® and Android Auto™**

- Kia recommends you update your smartphone to the latest operating system release.
- Visit <https://www.youtube.com/watch?v=8R6mmmtuFr8> for an informative video on wireless phone projection.
- Visit Apple.com for Apple CarPlay<sup>®</sup> app concerns.
- Visit the smartphone manufacturer's website for Android Auto<sup>™</sup> app concerns.

## An industry-leading limited warranty.

10 years/100,000 miles.\*\* That's Kia's industry-leading, powertrain limited warranty, and it stands as a testament to the craftsmanship and pride you'll find in every one of our vehicles.

## KIA Movement that inspires

2025 EV6 GT-Line AWD pre-production model shown with optional features. Not all optional features are available on all trims. Some features may vary. Images or graphics for illustration only. \*If equipped. †Driving while distracted can result in a loss of vehicle control that may lead to an accident, severe personal injury, and death. The driver's primary responsibility is in the safe and legal operation of a vehicle. Remain attentive to driving and be cautious when using steering wheel-mounted controls while driving. Use of any handheld devices, other equipment, or vehicle systems that take the driver's eyes, attention, and focus away from the safe operation of a vehicle or which are not permissible by law should never be used during the operation of the vehicle. ‡The Bluetooth® word mark and logos are registered trademarks owned by Bluetooth SIG, Inc., and any use of such marks by Kia is under license. A Bluetooth®-enabled cell phone is required to use Bluetooth® wireless technology. †Apple CarPlay®, iPhone®, and Siri® are registered trademarks of Apple Inc., registered in the U.S. and other countries. CarPlay runs on your smartphone cellular data service. Normal data rates will apply. †Android Auto vehicle user interface is a product of Google, and its terms and privacy statements apply. Requires the Android Auto app on Google Play™ store and an Android compatible smartphone running Android 5.0 Lollipop or higher. Data plan rates apply. Android, Android Auto, and Google Play are trademarks of Google LLC or its affiliates. ‡The Kia Access App for smartphone and smartwatch requires enrollment of vehicle in Kia Connect. Remote features require a Kia Connect subscription, a compatible smart device, and a wireless signal with good coverage to function. Normal cellular service rates may apply. Remote feature support varies by model, model year, and trim. †Purchase/lease of certain 2025 Kia vehicles with Kia Connect includes a complimentary 3-year subscription starting from new vehicle retail sale/lease date as recorded by the dealer. After your complimentary 3-year Kia Connect subscription expires, continued access to the full suite of Kia Connect services available on your Kia will require a paid subscription at the then-current subscription rate, or your use of certain Kia Connect features may immediately terminate. Message and data rates may apply. Cellular and GPS coverage is required to use most features. Kia Connect features may vary by model, model year, and trim level. Features, specifications, and fees are subject to change. For more on details and limitations, visit [www.kia.com](https://owners.kia.com/us/en/privacy-policy.html) or your authorized Kia dealer. Apple® and App Store® are registered trademarks of Apple Inc. †Charge time based on Kia Corporation testing with 800v DC fast charger and approximately 72 degrees Fahrenheit battery temperature. Actual charge will vary with options, driving conditions, driving habits, vehicle maintenance, charging practice, battery age, weather, temperature, and your vehicle's condition. Battery capacity will decrease with time and use. Frequent use of DC fast charging can negatively impact battery performance and durability, and Kia recommends minimizing use of DC fast charging. †Onboard power generator, also known as vehicle-to-load (V2L), requires the purchase of separately sold additional equipment and may not be compatible with all devices. These features can be used until a 20 percent battery state of charge. Refer to the vehicle's Owner's Manual for warnings and instructions. ‡Highway Driving Assist is not a substitute for safe driving, may not detect all objects surrounding the vehicle, and only functions on certain federal highways. Always drive safely and use caution. †Kia's New Vehicle Limited Warranty includes a 10-year/100,000-mile powertrain limited warranty and a 5-year/60,000-mile basic limited warranty. All warranties and roadside assistance are limited. See your Warranty and Consumer Information Manual or your Kia retailer for warranty details. ©2025 Kia America, Inc., 111 Peters Canyon Road, Irvine, CA 92606